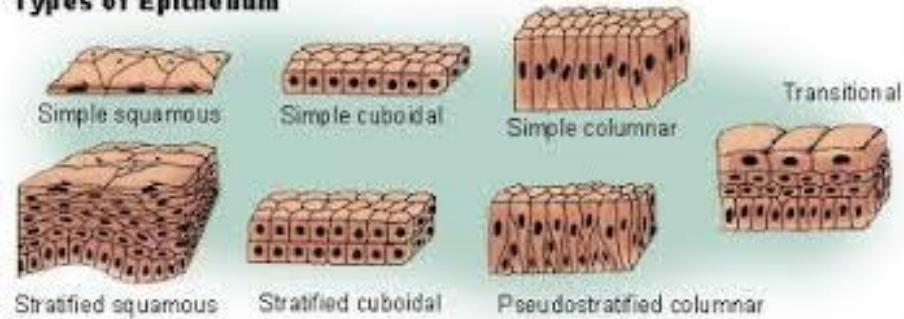


Types of Epithelium



1.2 Identity: **Tissues**

Summer Brown

Human Body Tissues



Areolar connective tissue



Adipose tissue



Fibrous connective tissue



Blood



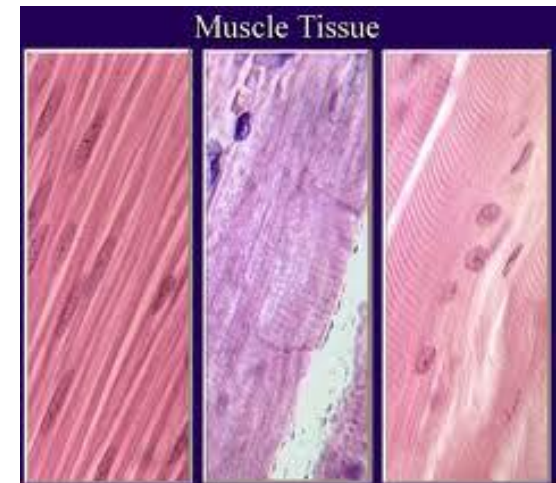
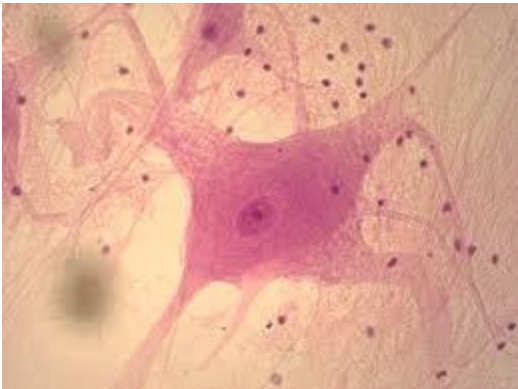
Osseous tissue



Hyaline cartilage

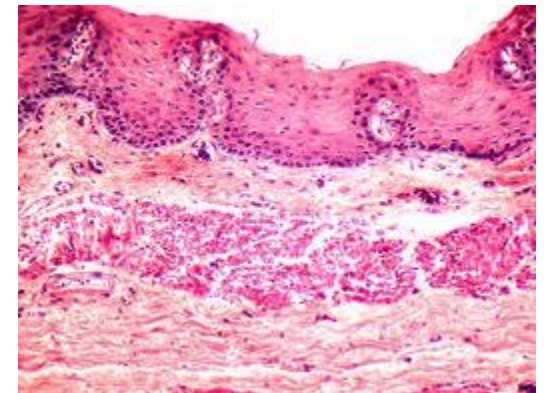
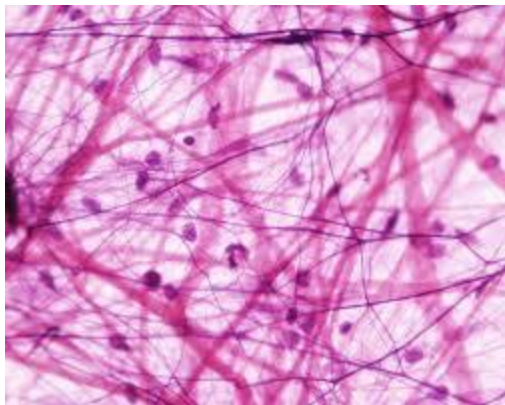
What are the main types of **tissue** in the human body?

- **Epithelial**- simple squamous, stratified squamous, simple cuboidal, simple columnar
- Muscular- skeletal, smooth, cardiac
- **Connective**- loose, adipose, blood, bone, cartilage
- Nervous- neurons, neuroglia



How does the structure of a type of human **tissue** relate to its function in the body?

- Muscular-elongated-contract and relax
- Nervous-neurons and neuroglia- carries impulses and supports nerve tissues
- **Connective**- few cells and widely separated-
- **Epithelial**- closely packed together w/ more than 1 layer- covers/lines body and organs



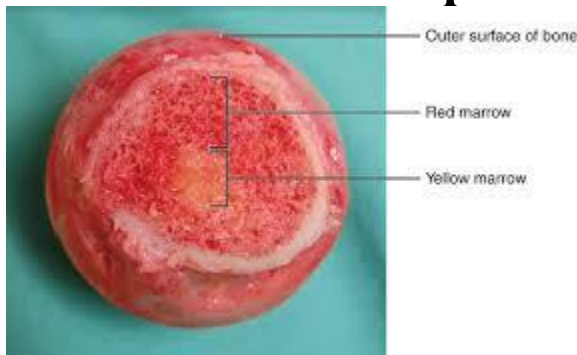
How does the distribution and structure of different types of **tissue** in the body contribute to personal identity?

- Tissues are distributed differently in every one so everyone looks different and has different features like fingerprints



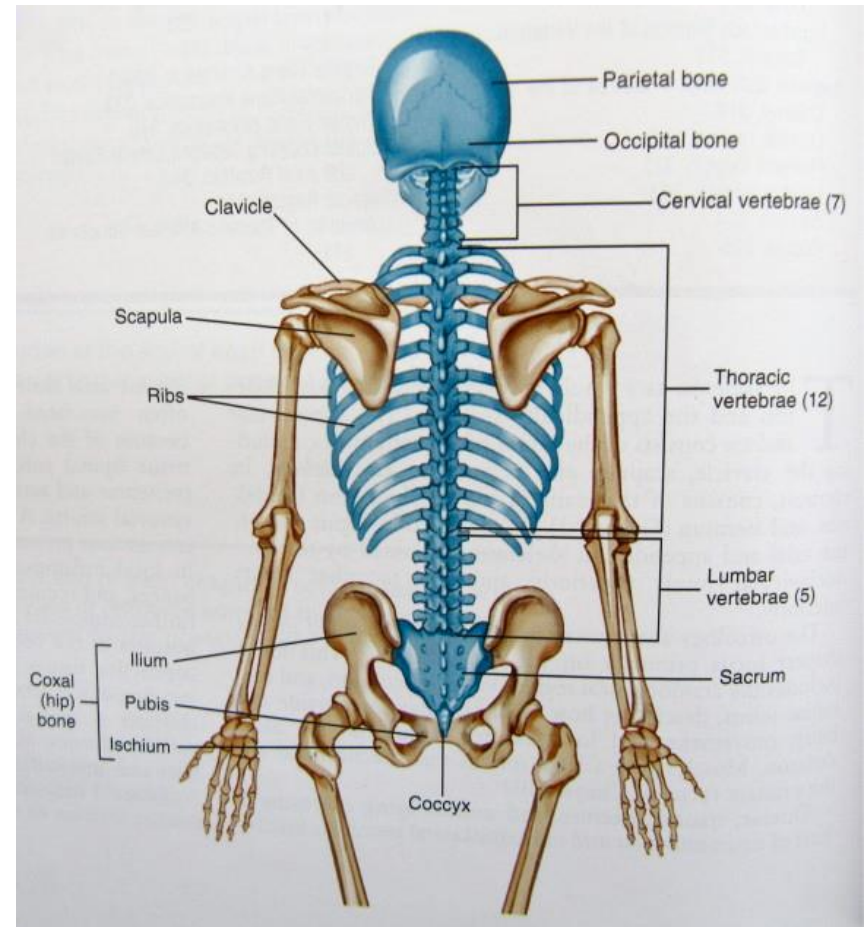
What are the functions of the human skeletal system?

- Support for the body
- Protection of organs
- Movement
- Storage of calcium, phosphorus, and red/yellow marrow
- Blood cell production



What are the main bones of the human skeletal system?

- **Cranium**
 - Vertebrae
 - Ribs
 - Sternum
 - Sacrum
 - Mandible
 - Clavicle
 - **Femur**
 - Fibula
 - **Humerus**
 - Ilium
 - Patella
 - Radius
 - **Tibia**
 - Ulna
- Axial Skeleton**
- Appendicular Skeleton**



What is **forensic anthropology** and how does this field relate to human body systems?

- Forensic= in open court, public
- Anthropology=Study of human beings
- **Forensic anthropologists** use human body system remains to identify human remains



How can features of bone be used to determine information about a person's gender, ethnicity, age or stature?

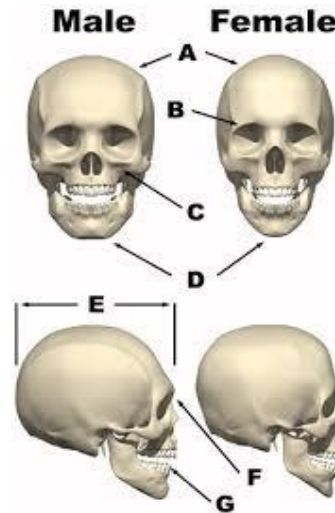
Gender:

- **Skull**- mandible, eyebrows, teeth
- **Pelvis**- wide & circular or narrow & heart-shaped
- Femur head- 45mm is female
51mm is male

Age:

- **Skull**-teeth are fused
- Ribs- get spiky as you age
- Vertebrae-bony spike form as you get older; they fuse together

stature?



Height

- **Femur**-measure in cm then multiply by 2.6 and add 65 to find approx. height
- **Humerus**-measure in inches, and if female multiply by 2.6 and add 65. If male, multiply 2.9 and add 27.9

Race:

- Caucasian- nasal openings are narrow; face is flatter
- Negroid-face projects; nasal openings wider
- Mongoloid-cheekbones are wider; space between eyes is greater

