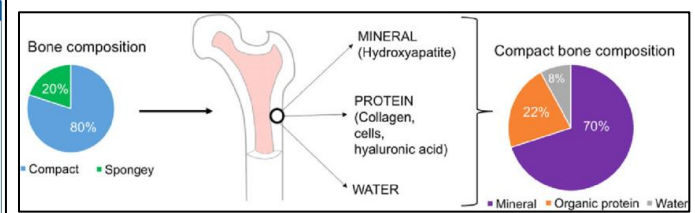
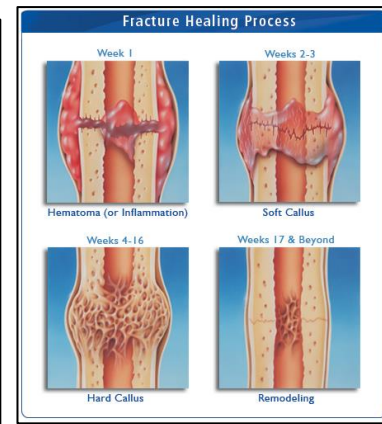
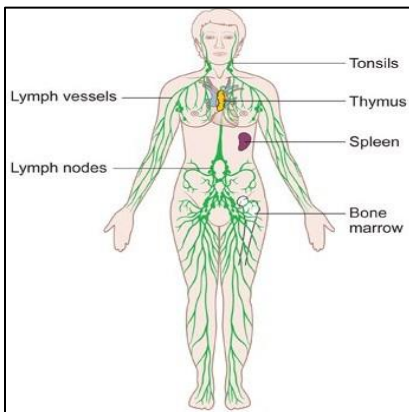
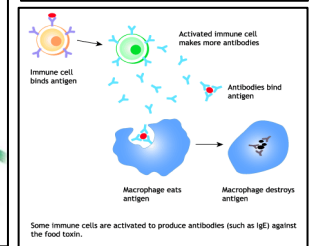
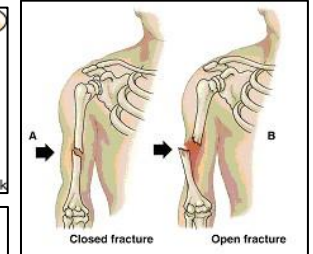
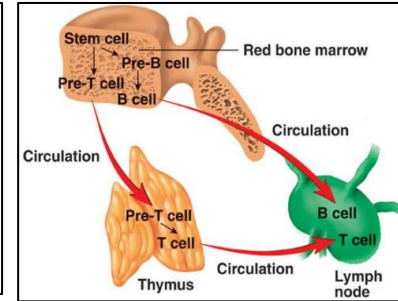
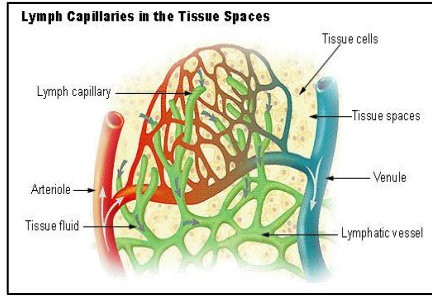
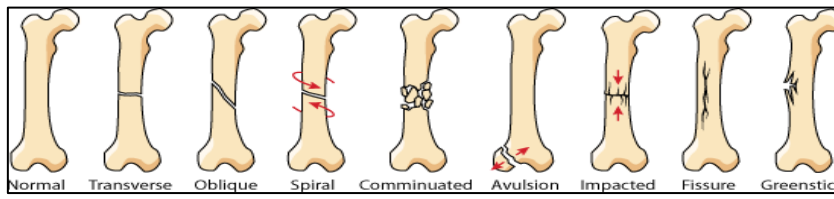
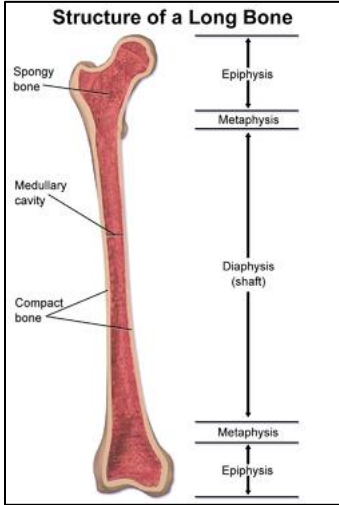
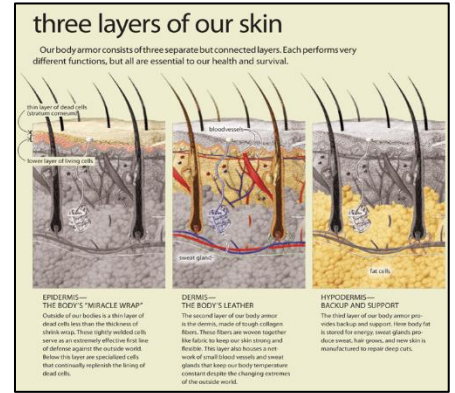
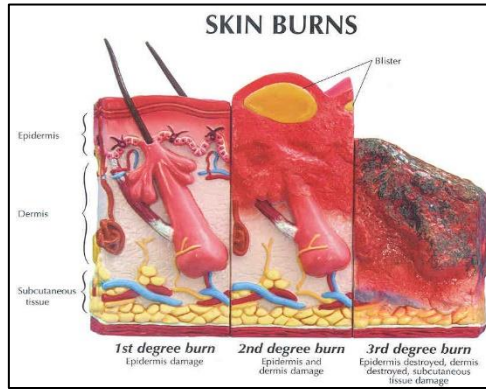
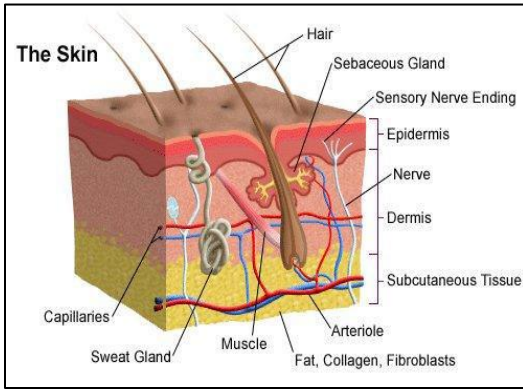
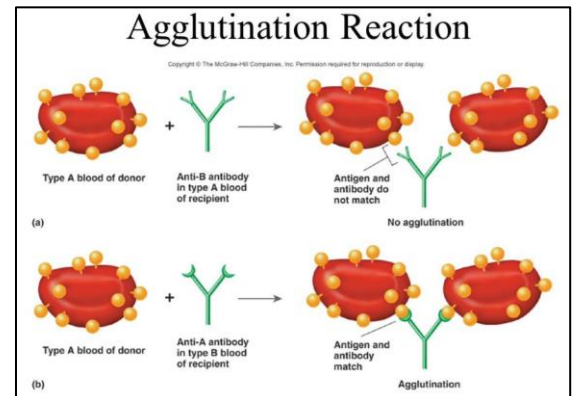
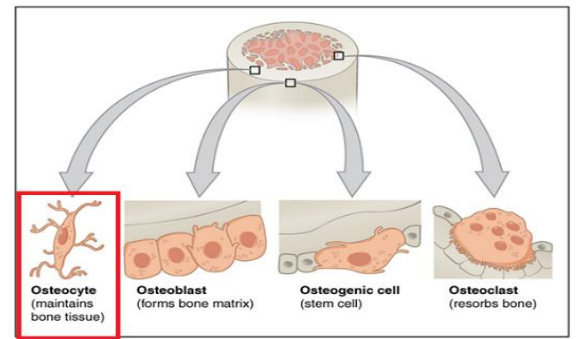


HBS 5.1 – 5.3 Diagrams

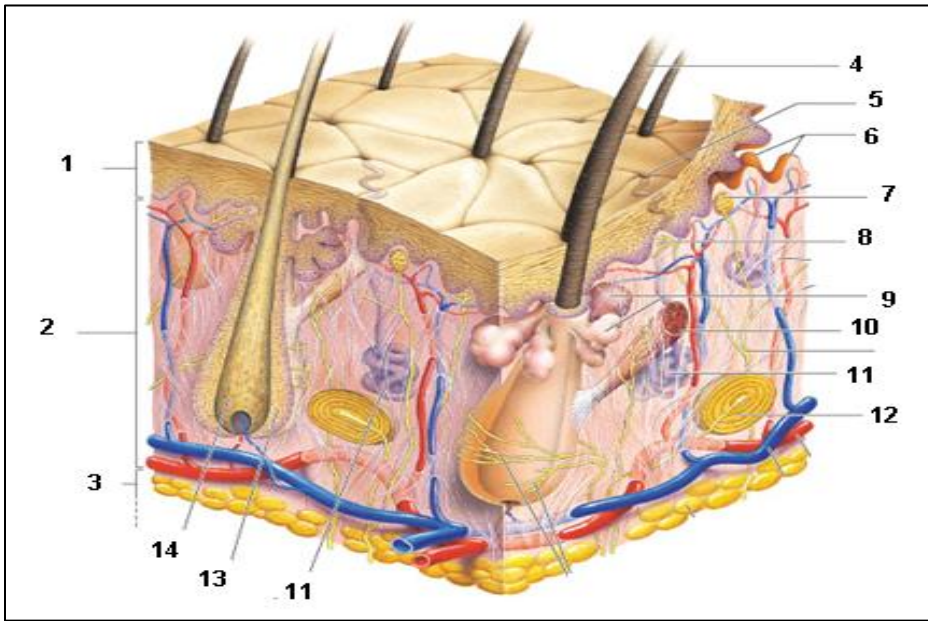


| ABO Blood Types | | | | |
|-----------------|--|--|---|--|
| | Antigen A | Antigen B | Antigens A and B | Neither antigen A nor B |
| Erythrocytes | | | | |
| Plasma | Anti-B antibodies | Anti-A antibodies | Neither anti-A nor anti-B antibodies | Both anti-A and anti-B antibodies |
| Blood type | Type A Erythrocytes with type A surface antigens and plasma with anti-B antibodies | Type B Erythrocytes with type B surface antigens and plasma with anti-A antibodies | Type AB Erythrocytes with both type A and type B surface antigens, and plasma with neither anti-A nor anti-B antibodies | Type O Erythrocytes with neither type A nor type B surface antigens, but plasma with both anti-A and anti-B antibodies |



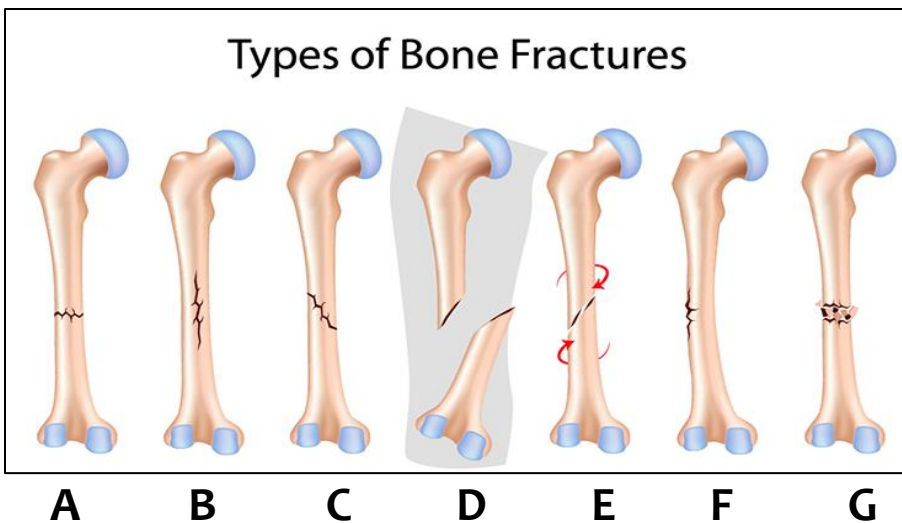
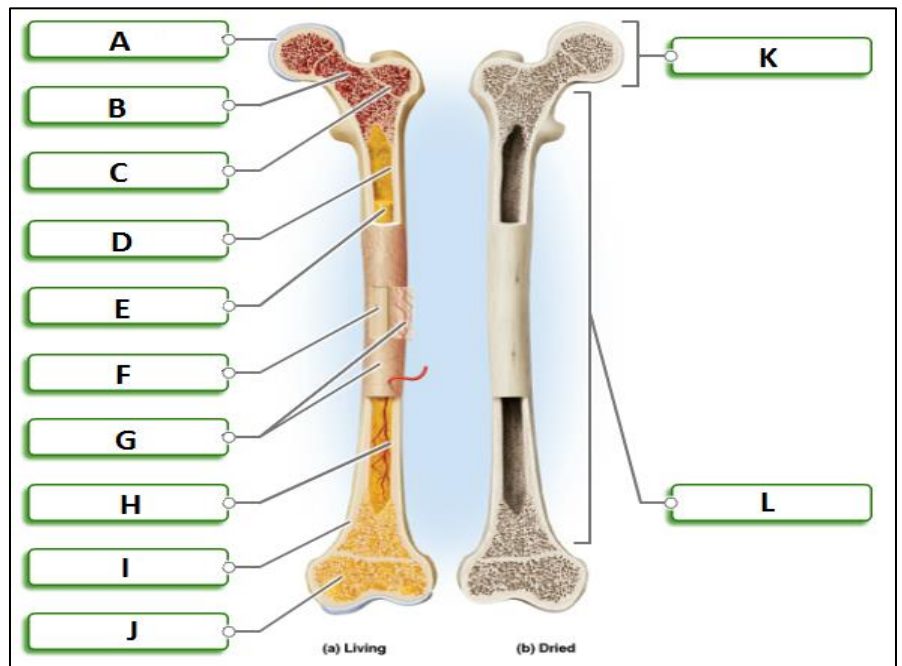
PRACTICE:

- Label the diagrams below:



- 1: _____
- 2: _____
- 3: _____
- 4: _____
- 5: _____
- 6: _____
- 7: _____
- 8: _____
- 9: _____
- 10: _____
- 11: _____
- 12: _____
- 13: _____
- 14: _____

- A: _____
- B: _____
- C: _____
- D: _____
- E: _____
- F: _____
- G: _____
- H: _____
- I: _____
- J: _____
- K: _____
- L: _____



- A: _____
- B: _____
- C: _____
- D: _____
- E: _____
- F: _____
- G: _____