

HBS 1.1 Diagrams

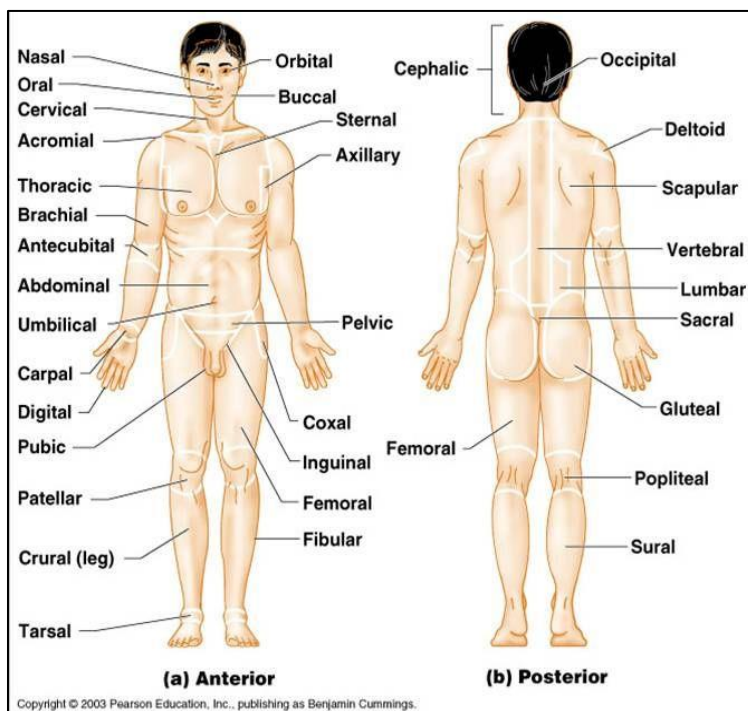
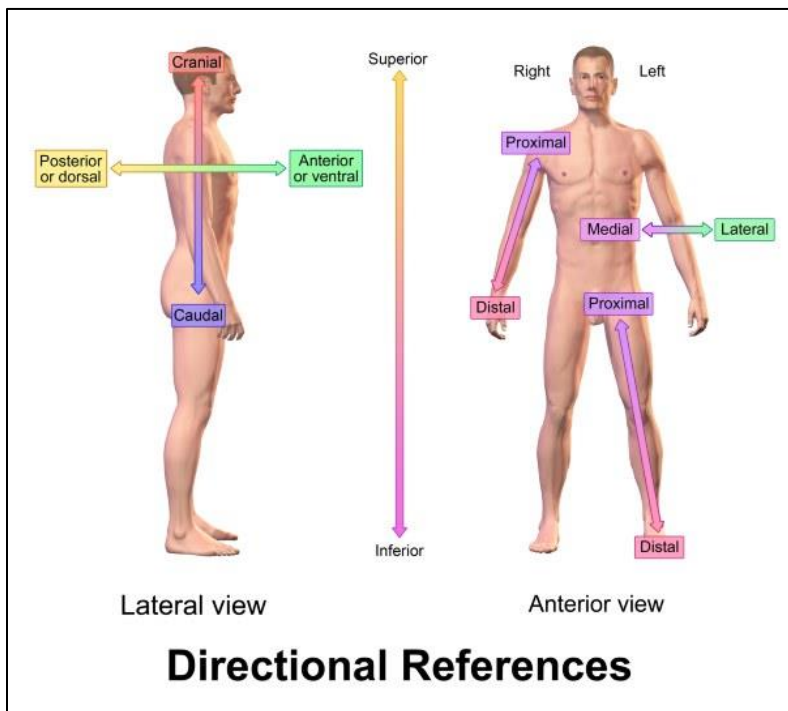


TABLE 1.1 Orientation and Directional Terms		
TERM	DEFINITION	EXAMPLE
Superior (cranial)	Toward the head end or upper part of a structure or the body; above	The head is superior to the abdomen
Inferior (caudal)	Away from the head end or toward the lower part of a structure or the body; below	The navel is inferior to the chin
Ventral (anterior)*	Toward or at the front of the body; in front of	The breastbone is anterior to the spine
Dorsal (posterior)*	Toward or at the back of the body; behind	The heart is posterior to the breastbone
Medial	Toward or at the midline of the body; on the inner side of	The heart is medial to the arm
Lateral	Away from the midline of the body; on the outer side of	The arms are lateral to the chest
Intermediate	Between a more medial and a more lateral structure	The collarbone is intermediate between the breastbone and shoulder

Copyright © 2006 Pearson Education, Inc., publishing as Benjamin Cummings.

TABLE 1.1 Orientation and Directional Terms		
TERM	DEFINITION	EXAMPLE
Proximal	Closer to the origin of the body part or the point of attachment of a limb to the body trunk	The elbow is proximal to the wrist
Distal	Farther from the origin of a body part or the point of attachment of a limb to the body trunk	The knee is distal to the thigh
Superficial (external)	Toward or at the body surface	The skin is superficial to the skeletal muscles
Deep (internal)	Away from the body surface; more internal	The lungs are deep to the skin

*The terms ventral and anterior are synonymous in humans, but this is not the case in four-legged animals. Whereas anterior refers to the leading portion of the body (abdominal surface in humans, head in a cat), ventral specifically refers to the "belly" of a vertebrate animal and thus is the inferior surface of four-legged animals. Likewise, although the dorsal and posterior surfaces are the same in humans, the term dorsal specifically refers to an animal's back. Thus, the dorsal surface of four-legged animals is their superior surface.

Copyright © 2006 Pearson Education, Inc., publishing as Benjamin Cummings.

