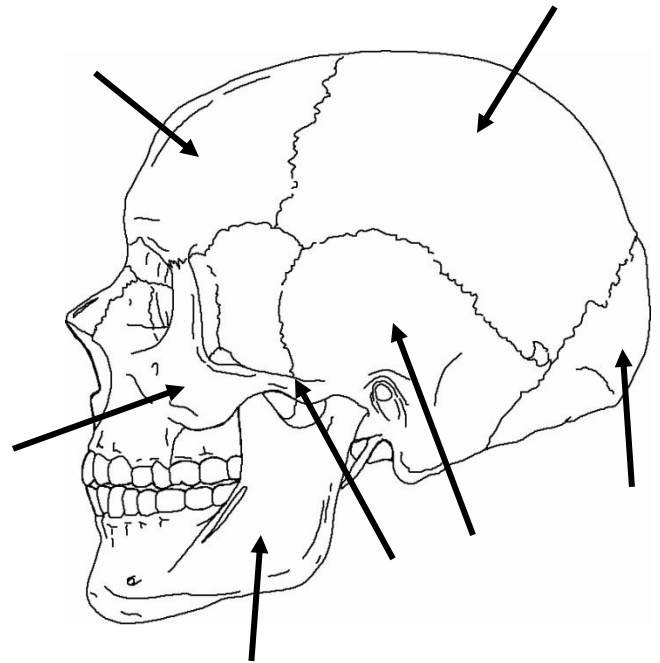
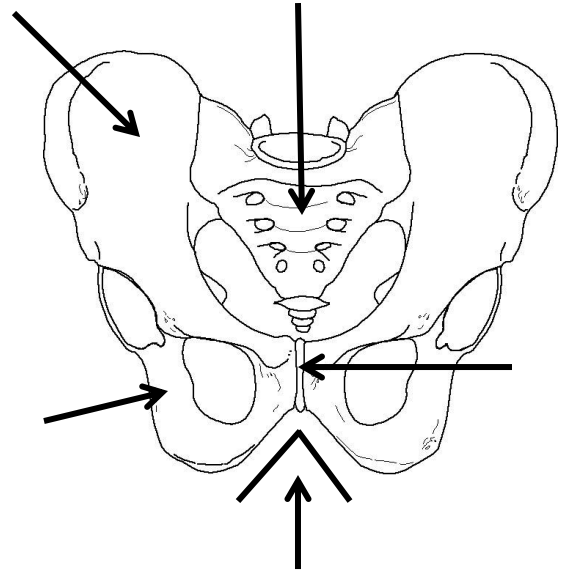
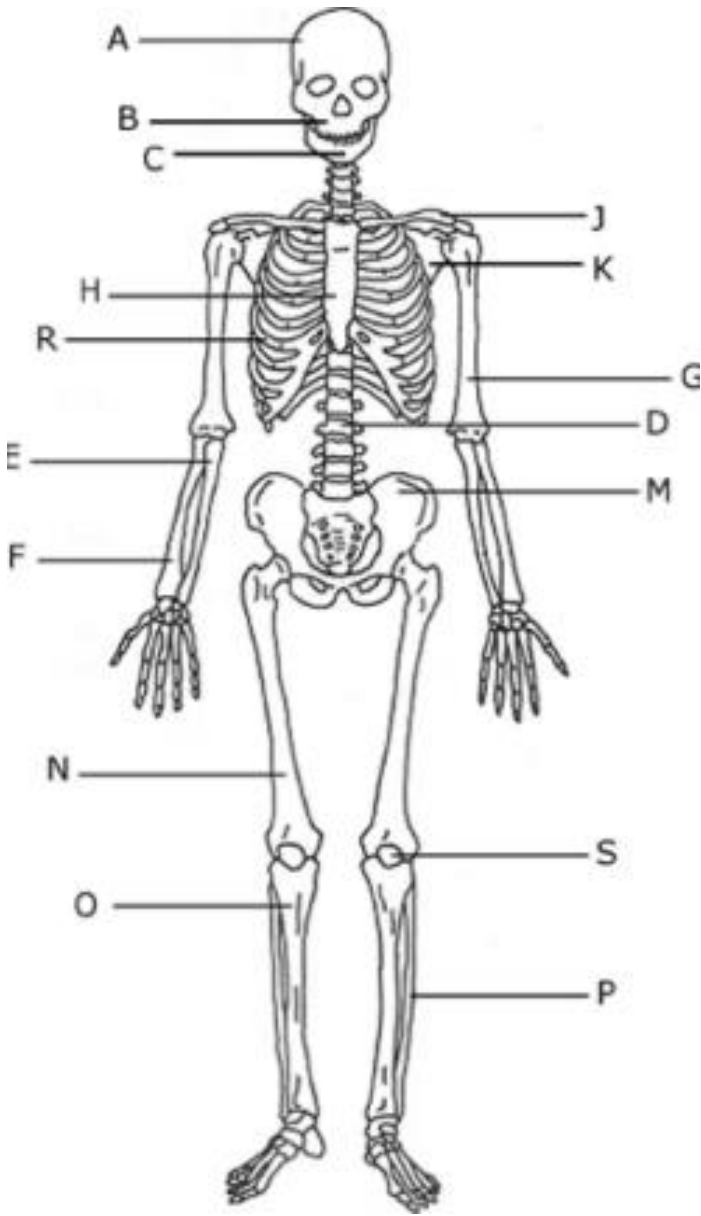


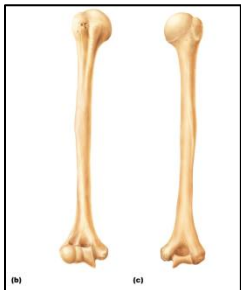
# HB5 1.2 Study Guide

Name: \_\_\_\_\_

- Label the images below:



- ID the bones/structures below:



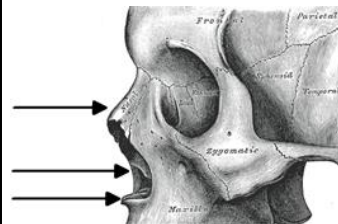
Bone:



Bone:

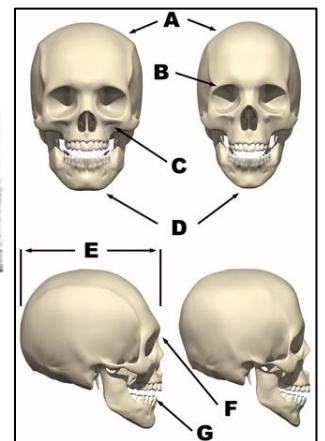


Bone:



Gender:

Gender:



- Identify parts of the skeleton that vary between each gender:
- Identify parts of the skeleton that vary between different age groups:
- Identify parts of the skeleton that vary between height:
- Identify parts of the skeleton that vary between different ethnic groups:
- What are the main tissue types of the body?
- How does the distribution and structure of different types of tissues contribute to identity?
- What are the functions of the skeletal system?
- What are some roles of a forensic anthropologist?
- What's the difference between an epicondyle, tuberosities, and a trochanter?
- What are the three parts of the sternum?
- What are sutures? What do they indicate?
- Differentiate between the axial and appendicular skeleton.
- What are the sections of the vertebrae? How many bones make up each section?
- What is the difference between a tendon, ligament, and a joint?
- What is the difference between a true rib, a false rib, and a floating rib?
- What are some muscles of the face? What are their functions?
- Which bones are the most accurate in determining height?