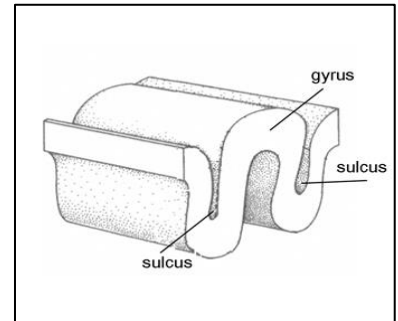
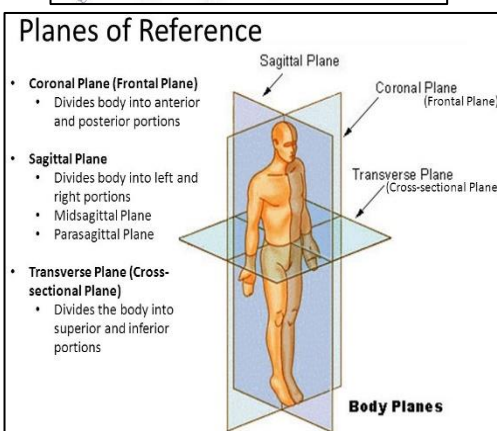
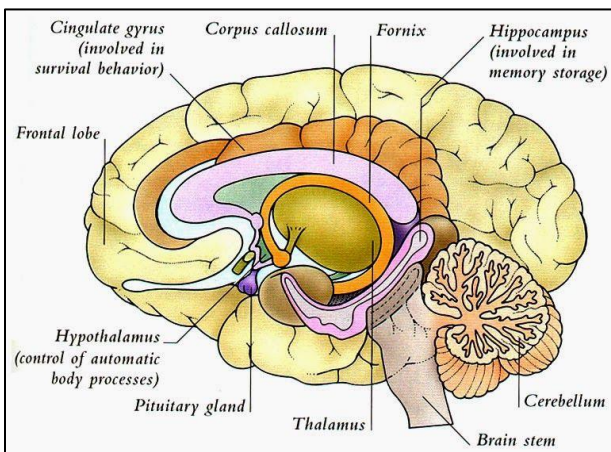
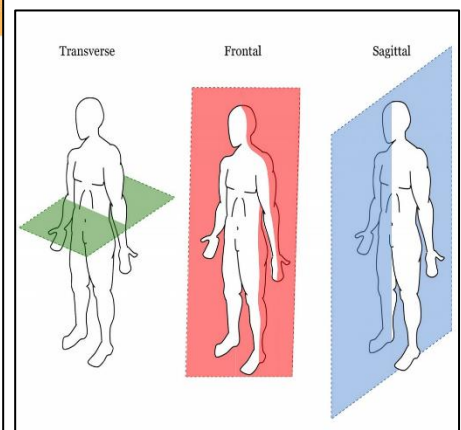
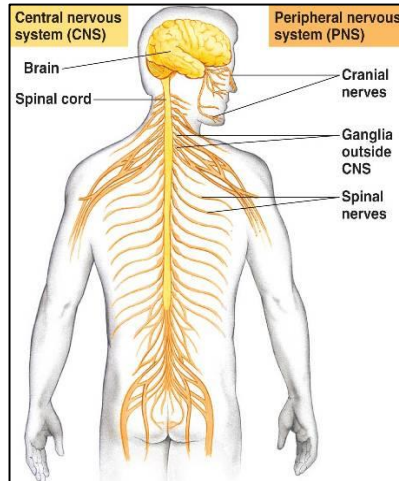
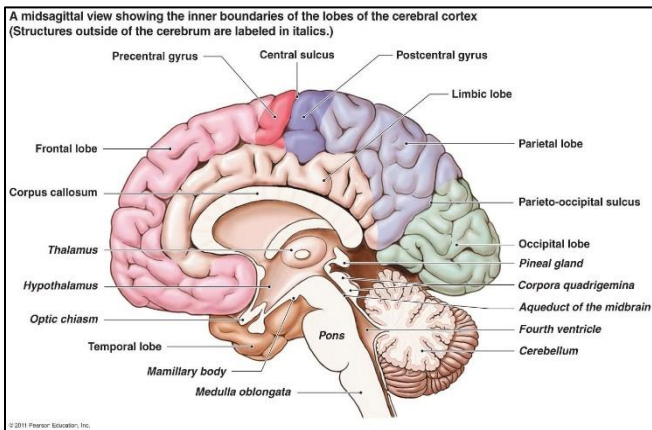
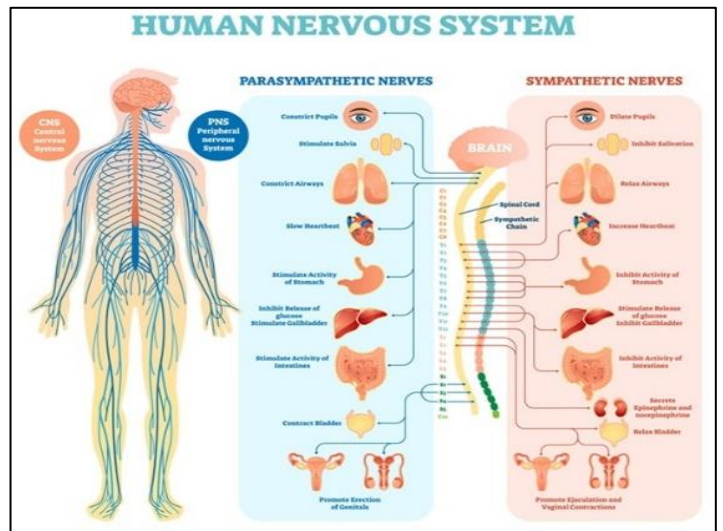
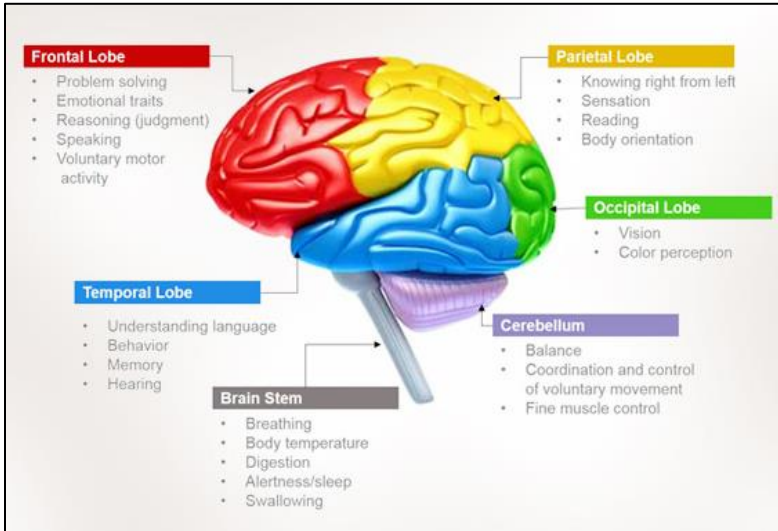
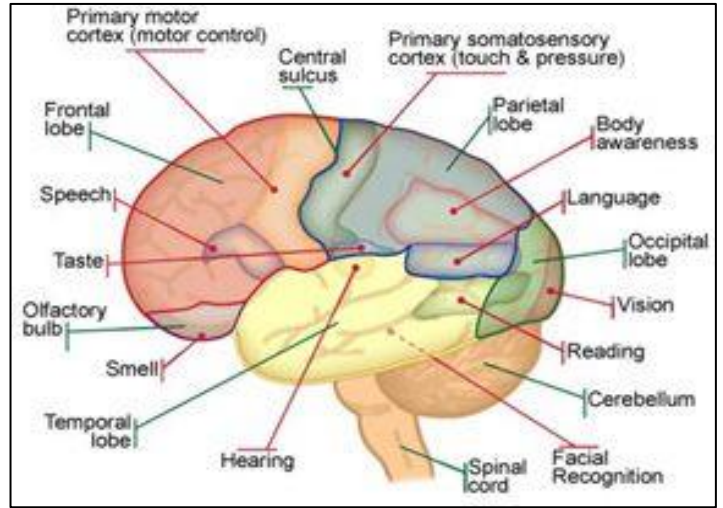
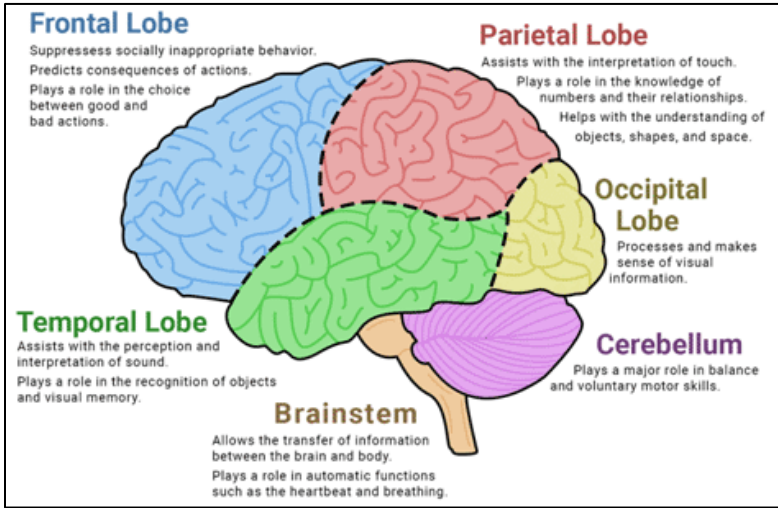
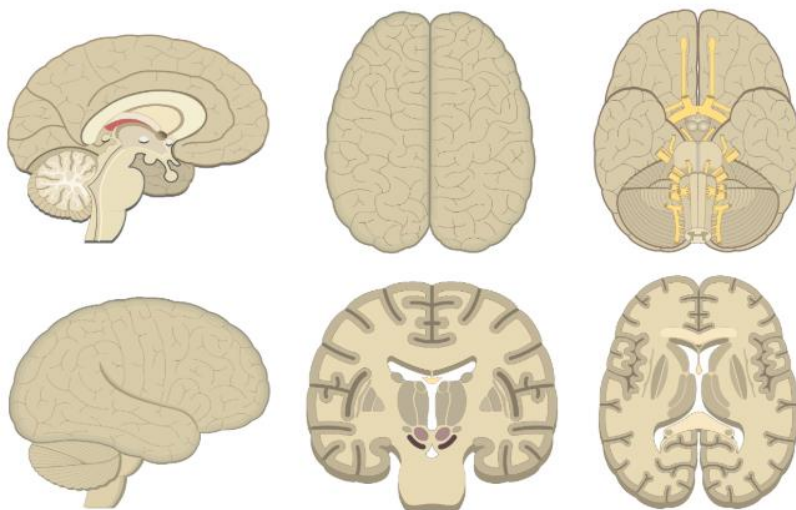
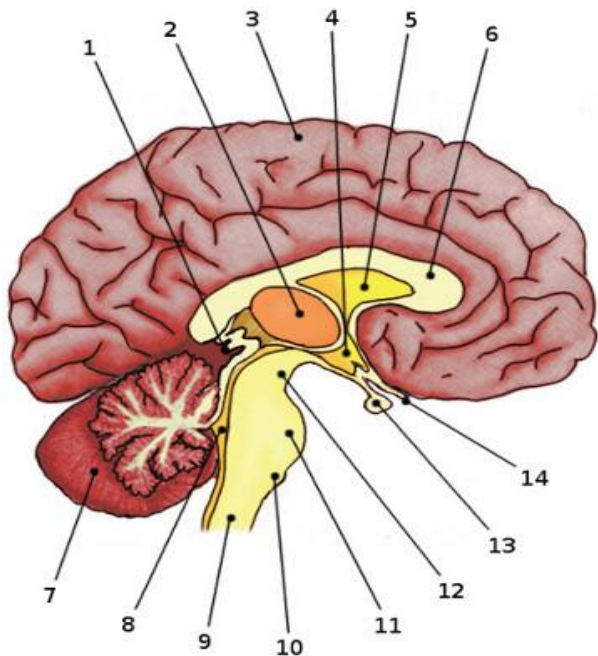


HBS 2.1 Diagrams



PRACTICE:

Label the Views & Planes of the Brain:



Matching:

_____ Brain Stem

_____ Hypothalamus

_____ Thalamus

_____ Cerebrum

_____ Cerebellum

A. Interprets all functions except smell. Contains synapses for voluntary movement.

B. Associated with regulation and coordination of movement, posture, and balance.

C. Responsible for basic life functions

D. Associated with higher brain functions such as thought and action.

E. Controls the automatic nervous system and coordinates the nervous & endocrine system.

Label the Parts & Functions of the Brain:

